

ROMER Articulation Arm: Multi-Gage

ROMER are the creators of the 3D portable measuring arms.

The ergonomic, light-weight, high strength design incorporating high accuracy make the ROMER portable arm and ideal measuring solution for inspection and reverse engineering. The Romer Multi-Gage has a spherical measuring volume of 1.2metres and achieves accuracies of up to 0.005mm. The power supply and computer interface are built into the base of the Multi-Gage.

The Romer Multi-Gage is used for dimensional control of molds, parts, tooling, castings and more. The portable measuring arm can be set up for on-demand measurement and inspection of parts or assemblies.

SolidWorks and DeZignWorks Software



DeZignWorks is a Reverse Engineering Software tool that is being used to collect data with the Romer Multi-Gage measuring arm. It allows the user to perform feature based reverse engineering directly inside of SolidWorks. The DeZignWorks Pro package allows you to validate surfaces and report deviations.



**21 INDUSTRIAL ROAD
UNANDERRA NSW 2526**

**PO BOX 329
UNANDERRA NSW 2526**

CONTACTS:

Quotes - E-mail: brad@parkengineering.com.au

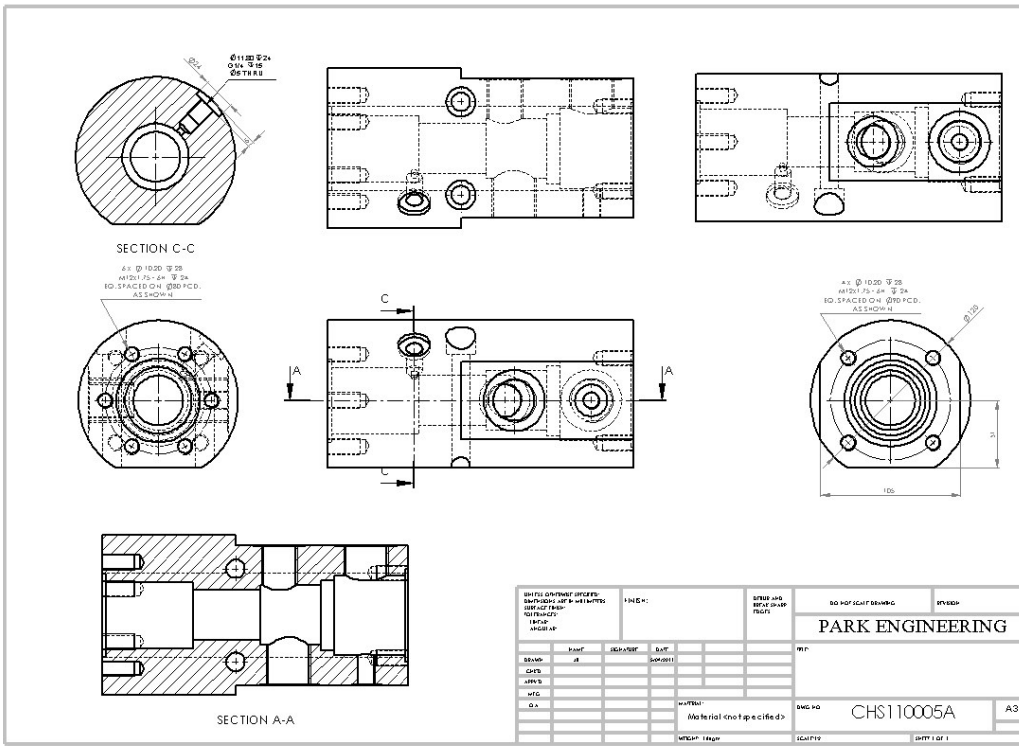
Director - E-mail: jarrod@parkengineering.com.au
Accounts - E-mail: office@parkengineering.com.au
Purchasing - E-mail: martin@parkengineering.com.au

**Phone: 02 4271 4037
Fax: 02 4271 8719**

ROMER Articulation Arm: Multi-Gage

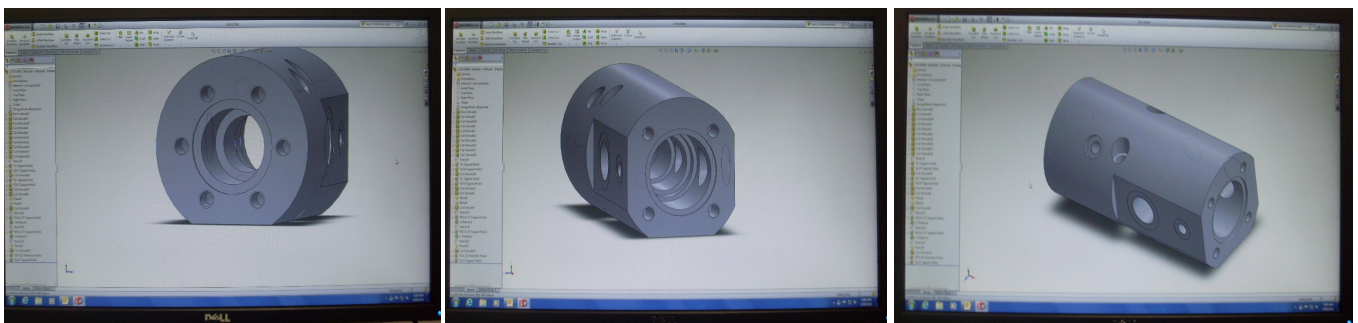


Above: ROMER—Articulation Arm Multi-Gage



Combined these two products allow Park Engineering the ability to reverse engineer any item, to supply full detailed engineering drawings and will also be used for quality control inspections.

Below: DeZignWorks - Reverse Engineering Software





PARK ENGINEERING

PRECISION ENGINEERS IN

- CNC Machining
- Manufacturing
- Light Fabrication

